



WHO ARE PEER SUPPORT CONSULTANTS?

They are STA member colleagues with extensive experience and background in multiple teaching strategies, and training in planning, consultation, classroom observation, analysis, and feedback skills. Sometimes you are matched with a volunteer or one of our released Peer Support Consultant.

WHAT ABOUT CONFIDENTIALITY?

Your Peer Support Consultant is a fellow teacher who is bound by the BCTF Code of Ethics just as you are.

Therefore, no evaluative comments about you will be made to your administrator or anyone else.

HOW DO I GET STARTED?

Peer support can be accessed by contacting Human Resources or the STA. Please visit www.surreyteachers.org/services/peer-support for more information.



CONTACT INFORMATION

For more information about Peer Support Services or to make an appointment with a consultant you may contact any one of the following:

MEMBERS AND ADMIN

Pauline Veto

STA Professional Support Services
604-592-8392
services@surreyteachers.org

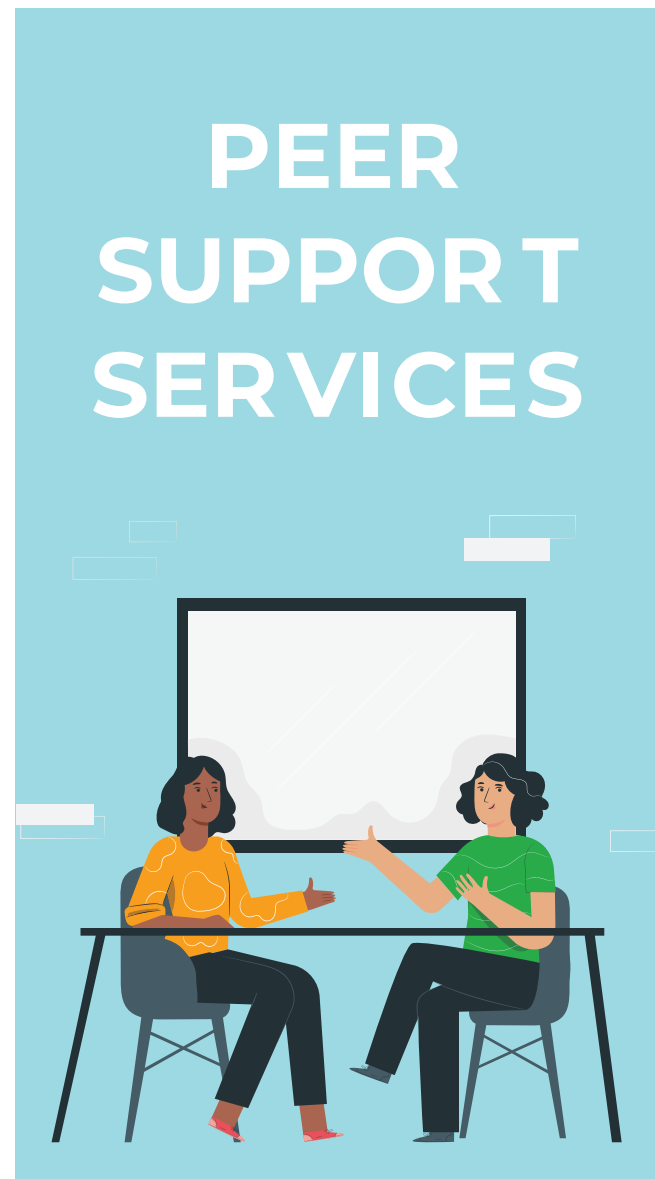
ADMIN

Peggy Antifaeff

Human Resource District Principal
604-595-6159
antifaeff_p@surreyschools.ca

Carol Davison

Human Resource District Principal
604-595-6158
davison_c@surreyschools.ca



A joint project between the
Surrey School District
and the Surrey Teachers' Association



WELCOME TO PEER SUPPORT

Peer Support Services (PSS) is about teachers helping teachers with an aspect of their professional work.

We match teachers with consultants who have taught in similar grades, courses or roles.

Participation in PSS is voluntary and all information is kept confidential.

The service offers you non-judgemental, and non-evaluative opportunities to reflect upon your growth towards goals you set.



IS PEER SUPPORT RIGHT FOR ME?

Teachers who choose to participate in Peer Support do so for a variety of reasons:

- a new assignment
- teaching outside of usual subject area
- complex class composition
- a challenging class
- workload stress
- a desire to try a new strategy
- support before a first year evaluation

HOW DOES IT WORK ONCE PAIRED WITH A CONSULTANT?

Peer Support is a confidential collaboration between you and the consultant.

To begin, the peer support consultant will meet with you to talk about your areas of interest or concern. Together you will generate ideas about what kinds of assistance would be useful to you. An initial visit to your classroom will be set up in order for the consultant to come and get a sense of your unique situation.

After the first visit, you will set some goals and decide on follow up meetings and activities. Classroom observation and feedback, visits to other classrooms, and one-on-one planning sessions are some of the things that might be useful.

Your Peer Support Consultant can also assist you with:

- gathering resources
- classroom management skills
- implementing curriculum
- assessment strategies
- planning units or lessons
- differentiated instruction

Once goals have been addressed and you feel that your needs have been addressed, peer support tapers off and ends.



If you can identify an area of your teaching practice that you would like to refine or improve, Peer Support can benefit you!